



DC POWER 直流电源专家
EXPERTS

上海贵捷电气有限公司
SHANGHAI GUIJIE ELECTRIC CO.,LTD.

公司简介 上海贵捷电气有限公司

上海贵捷电气有限公司是一家集科研、设计、生产、服务和贸易为一体的高新技术企业。我公司主导产品为GZDW直流电源、工业UPS电源、免维护蓄电池、EPS应急电源以及直流电源系统套件和技术服务等，广泛运用于电力、冶金、邮电、通信、石化等领域。

企业自成立以来，通过不断与国内外知名科研机构和企业合作交流，融入了先进的生产技术和经营理念，使我们产品的研发和生产提升到直流行业的领先水平。以此为契机，我们开发出了代表国内顶尖技术的新一代全数字式工控电源产品，并在使用中受到了国内外用户的一致好评，“贵捷”正在逐步深入人心！

贵捷人始终贯彻“以技术为核心，视质量为生命，奉用户为上帝”的中心思想，严格以ISO9001质量管理体系生产和服务，奉行“求实、创新、拼搏、服务”的方针，竭诚为用户提供性能稳定、技术先进的产品和无微不至的服务！

我们真诚的希望在器件销售、工程项目及系统开发上能与新老客户开展多方面合作，共同发展！



ABOUT US



Shanghai Guijie electrical co.,Ltd is a high-tech enterprises which combined scientific research, design, production, trade and services . The main products of us is GZDW direct supply, technology UPS supply, maintenance-free battery, EPS emergency supply, direct supply system series products and technical service. They are generally applied in the field of electricity power, metallurgy, post, communication, petrochemical.

Through the continuously cooperation and communication with many well-known institution and company locally or abroad, we have upgraded our researching and production level to a higher one in the field of direct supply thanks to our advanced technology and administration. We have developed a new generate digital industrial power supply products which represented the top technology level in china. We have got generally praise from all of our customers.

“GUIJIE” is becoming more and more famous!

The philosophy of GUIJIE is “ technology is our core, quality is our life, customer is our god” manage the production and service seriously according to the ISO 9001 quality administration system, Adhere to the policies of“truth-seeking, innovation, hard working and service”, try our best to offer advanced technology product with reliable performance and careful service! We sincerely wish we can have a good cooperation with our new and old customers in the aspects of sale, projects and system developing, and develop together!



GUIJIE ELECTRIC



求实 创新 拼搏 服务

求 实：求实是浓缩企业自强不息的精神

创 新：创新是贯穿企业发展历程的灵魂

拼 搏：拼搏是激励企业奋发向上的支柱

服 务：服务是体现企业面向用户的承诺

Truth-seeking: The struggling sprit of the company

Innovation: The soul of company history

Hard working: The support of our developing

Service: The promise to the customers

我
们
在
不
断
的
超
越
！



We are going beyond ourselves continuously



GUIJIE ELECTRIC

产品概述 PRODUCT OVERVIEW

GZDW系列直流电源柜是在总结了电力系统用直流电源领域先进、成熟的设计，和广大用户设备网上运行经验及发展动向的基础上而开发出的新一代直流电源装置。被广泛应用于各类发电厂、变电站（所）、飞机场、港口、冶金、石油、化工、工矿企业等部门用变电站及宾馆大厦的变配电室，供直流机构（断路器分合闸）、继电保护、自动控制、二次回路中仪器仪表、事故照明以及应急事故负荷电源之用，特别适用于无人值守的变电站运行需要。

本产品符合ZBK45017-90《电力系统用直流屏通用技术条件》、DL/T459-2000《直流电源屏（柜）订货技术条件》和LS(W)30-40JT《微机控制直流电源柜技术条件》等标准的技术要求，产品质量达到国内领先水平。

GZDW series new generation DC power supply cabinet have summed up the advanced and mature designs, the actual running experiences of vast number of users on-line equipments, and developing trend. They have been widely used in the power transformer and distribution room of various types of power plants, substations, airports, ports, metallurgical plants, oil, chemical, industrial, mining enterprises, buildings and hotels. They were used as the power supply of DC agencies (sub-circuit breaker), relay protection, automatic control, the second circuit in instrumentation, accident and emergency lighting. They are especially suitable for unmanned substation.

The products comply with

- ZBK45017-90<<Power System DC-screen general technical conditions>> ,
- DL/T459-2000<<Dc-screen/ cabinet ordering technical conditions>> ,
- LS (W) 30-40JT<<microprocessor controlled DC-cabinet technical conditions>> ,

the quality have reached the leading domestic level.



型号说明 DESIGNATION

GZD W - Ah/ V

系统额定电压/ system rated voltage

蓄电池容量/ Battery capacity

类型编号/ Type code

微机控制/ microprocessor controlled

电力系统用直流电源/ Power systems with DC power

- ✦ 系统额定电压：DC220V，DC110V，DC48V，DC24V可选；
- ✦ 蓄电池容量：7Ah-3000Ah可选；
- ✦ 类型编号：
 - ‘10’：24Ah及以下小系统、壁挂式直流电源系列；
 - ‘20’：“贵捷”自制一体化监控、高频充电模块；
 - ‘22’：“贵捷”自制智能监控、液晶显示触摸屏、高频充电模块；
 - ‘30’：德国西门子主监控、美国艾默生系列产品、台湾Hitech触摸屏；
 - ‘33’：工控机主监控及超大屏幕触摸屏。

System nominal voltage: DC220V, DC110V, DC48V, DC24V (optional);

Battery capacity: 7Ah-3000Ah (optional);

Type code:

'10': suitable for small system whose capacity is not higher than 24Ah and wall-hanging direct supply series

'20': GUIJIE patented integrated monitor, high frequency Charging-up module

'22': GUIJIE patented intelligent monitor ,LCD touch screen, high frequency charging-up module

'30': Siemens monitor from Germany Emerson series products from United state, Hitech touch screen from Taiwan;

'33': Industrial control computer controlled ,with oversized Touch screen.

使用环境 USAGE ENVIRONMENT

- ✦ 海拔不超过3000m。
- ✦ 设备运行期间周围环境温度不高于45℃，不低于-15℃，最大日温差不大于35℃。
- ✦ 日平均相对湿度不大于95%，月平均相对湿度不大于90%。
- ✦ 使用地点无强烈振动和冲击，无强电磁干扰，外磁场感应强度均不得超过0.5mT。
- ✦ 安装垂直倾斜度不超过5°，地震烈度不超过8°。
- ✦ 污染等级：不大于3级，环境中无导电微粒。
- ✦ 使用地点不得有爆炸危险介质，周围介质不含有腐蚀金属和破坏绝缘的有害气体及导电介质，不允许有霉菌存在。
- ✦ 超出以上环境条件时，应在订货时提出。
 - Maximal altitude is 3000m;
 - Maximal ambient temperature is 45℃ and -15℃; maximal temperature difference within a day is 35℃;
 - Average relative humidity of a day is not bigger than 95%; average relative humidity of a month is not bigger than 90%;
 - Without violent vibration and shock; without strong electromagnetism. the maximal induction intensity outside is 0.5mT;
 - Maximal inclination after installed is 5° , maximal seismic intensity is 8° ;
 - Pollution class: not higher than level 3, no conductive powder around;
 - No explosive material around, no pernicious gas which might damage the insulation and corrupt the metal, no Conductive Material, no Streptomyces;
 - Please specify the real situation in detail with the order in the event of it is beyond the conditions above ;

系统参数 SYSTEM PARAMETERS

- ✦ 交流输入：AC380V±15%，50HZ±5%，三相三（四）制，两路电源输入；
- ✦ 直流输出电压：DC220V、DC110V、DC48V、DC24V；
- ✦ 输出电流：控制母线（KM）5~200A，合闸母线（HM）5~3000A；
- ✦ 电池容量：铅酸免维护蓄电池7Ah~3000Ah；
- ✦ 稳压精度：≤±0.5%；
- ✦ 稳流精度：≤±0.5%；
- ✦ 纹波系数：≤±0.5%；
- ✦ 系统效率：≥90%；
- ✦ 功率因素：≥0.92；
- ✦ 运行噪音：≤50dB；
- ✦ 介电强度：2000V/min无闪络，无击穿；
- ✦ 接地电阻：<0.1Ω；
- ✦ 输出回路：标准配置控母（KM）5路、合母（HM）5路。（可根据用户要求定制）
- ✦ 屏体结构：公司产品屏体采用PK结构，正面配玻璃门，后门双开，充电柜顶部安装有轴流风机；
- ✦ 防护等级：=IP20；
- ✦ 外形尺寸：800×600×2260(mm) 或 800×600×2360(mm),或根据用户要求定制。
 - AC input: AC380V±15%, 50HZ±5%, three phase-three(four) line system, two separate input circuits;
 - DC output voltage: DC220V、DC110V、DC48V、DC24V;
 - Output current: controlling bus bar (KM) 5~200A, closing bus bar (HM) 5~3000A;
 - Battery capacity: maintenance-free lead battery 7Ah~3000Ah;
 - Voltage regulation precision: ≤±5%;
 - Current regulation precision: ≤±5%;
 - Ripple factor: ≤±5%;
 - System efficiency: ≥90%;
 - Power factor: ≥0.92;
 - Running noise: ≤50dB;
 - Dielectric strength: 2000V/min, no arc-over, no break down;
 - Ground resistance: <0.1Ω ;
 - Output circuit: 5 circuits of the controlling bus bar, and 5 circuits of the closing bus bar as standard (or customized according to the requirement of customer);
 - Cabinet structure: PK structure, with glass door in the front and double back door. With propeller type fan on the ceiling of the cabinet;
 - Protection class: =IP20;
 - Outer dimension: 800×600×2260(mm) or 800×600×2360(mm), or customized according to the requirement of Customer;

类型介绍 TYPE INTRODUCTIONS

GZDW20 系列简介:

- 该系列是专为100Ah及以下容量直流系统而设计的。是我公司自主研发的一体化监控系统，由中央监控装置、液晶显示触摸屏、高频充电模块、母线自动调压装置、铅酸免维护蓄电池、交直流配电单元等部分组成。
- 系统采用一体化设计思想，均采用插拔结构，安装、维护方便。
- 监控模块采用LCD汉字菜单显示，可实现参数设置、状态检测、故障指示等。
- 系统具有结构简单、外形美观、运行可靠，经济实用等特点。
- 优化了蓄电池充放电管理及温度补偿等功能，有效的提高了蓄电池的使用寿命。
- 具有后台远程通信四遥功能（提供MODBUS、CDT等多种通讯规约及RS485、RS232等多种接口方式），真正实现了无人值守。
- 根据用户需求，可增加电池巡检装置、微机绝缘监测装置、逆变电源装置、通讯电源装置等功能组件。

Brief introduction to GZDW20:

- The series was developed for the DC system whose capacity is lower or equal to 100AH specially. It is a kind of integrated monitor system developed by us, consisted of main monitor device, LCD touch screen, high frequency charging module, bus bar voltage auto-adjusting device, maintenance-free lead battery and AC/DC distribution unit.
- System designed according to an integration idea, with hot-swappable structure; installation and maintenance convenient;
- LCD monitor module with Chinese menu, parameters settable, state and fault directed;
- The system is simple, beautiful, reliable, economical and practical;
- Optimized the charge and discharge of the battery and the temperature compensation, improved the battery life effectively
- The system can be unattended thanks to its background long range communication remote function(with MODBUS and CDT communication protocol and RS485 and Rs232 physical ports);
- Possible to add also the parts of battery checking device, microprocessors I Nsulation detecting device, supply inversion device, communication supply, etc.



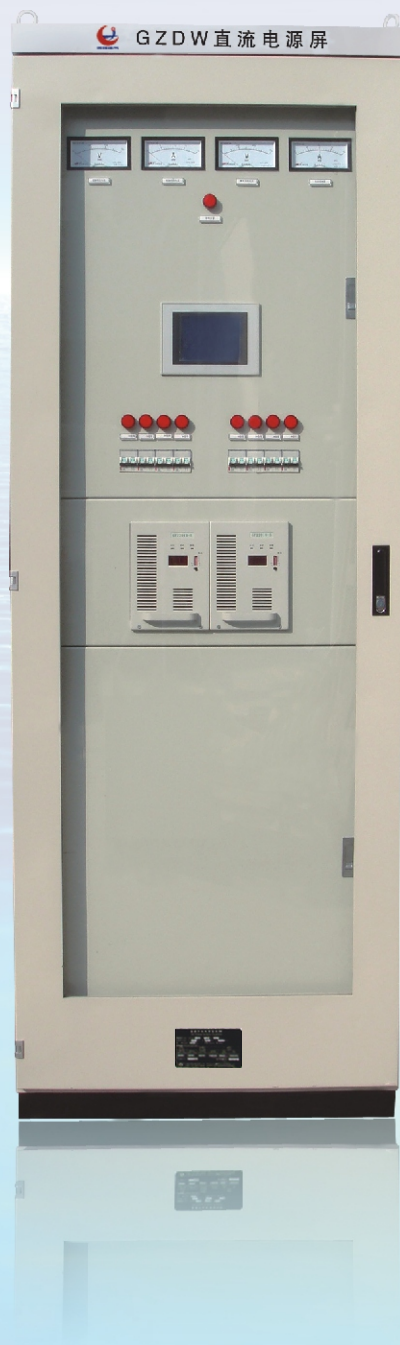
类型介绍 TYPE INTRODUCTIONS

GZDW22 系列简介:

- 该系列是我公司自主研发的智能监控系统，由智能型微机监控装置、高频充电模块、母线自动调压装置、铅酸免维护蓄电池、交直流配电单元等部分组成。
- 采用高频开关电源技术、N+1热备份，充电模块可带电插拔，维护方便快捷。
- 电压输入范围宽，电网适应性强，有可靠的防雷及电气绝缘防护措施，确保系统和人身安全。
- 采用大屏幕触摸屏，点阵式液晶显示，CCFL背光，实现全汉化实时显示及操作。
- 可通过点击触摸屏进行系统参数查询、设置，人机界面友好，操作简单方便。
- 监控系统可自动完成对电池电压、充放电电流及温度补偿的精确管理，确保电池工作在最佳状态，延长电池使用寿命，自动控制蓄电池的均充 / 浮充转换，具有电池过欠压、过温告警及过充电保护等功能。
- 采用以微处理器为核心的集散式监控系统，模块化设计，实施对电源系统全方位的监测、控制及“四遥”，实现无人值守。
- 根据用户需求，可增加电池巡检装置、微机绝缘监测装置、逆变电源装置、通讯电源装置等功能组件。

Brief introduction to GZDW22:

- The series is a kind of intelligent monitor system developed by us, consisted of intelligent microprocessors monitor device, high frequency charging module, bus bar voltage auto-adjusting device, maintenance-free lead battery and AC/DC distribution unit.
- Adopting high frequency switch technology, N+1 hot-backup, charging unit hot-swappable, maintenance convenient;
- Wide range of input voltage acceptable, power grid adaptable, with reliable Lightning and electrical insulation protective measures, ensure personal and system's safety
- With big size touch screen, dot-matrix LCD, CCFL backlight, entire Chinese operations and real-time display
- Querying and setting up the parameters through the touch screen, friendly man-machine conversation interface, easy operation.
- The system can manage automatically the charging and discharging of the battery, the current value and the temperature compensation, ensure a best working condition of the battery, improved the battery life effectively. Control automatically the conversion between the equalizing charging and floating charging, with the functions of warning to over voltage, low-voltage, over temperature and over charged protection.
- Use microprocessors as the core of the distributed control system, modular design, implement a full range of power system monitoring, controlling and the "four remote", to be unattended.
- Possible to add also the parts of battery checking device, microprocessors insulation detecting Device, supply inversion device, communication supply, etc.



类型介绍 TYPE INTRODUCTIONS

GZDW30 系列简介:

针对电力系统对开放式组态软件及通信功能不断提出更高的要求，在直流电源领域中，推出了自动化程度更高、保护配置更合理、全数字检测调节和控制的智能数控直流电源屏。该系列由可编程控制器PLC、高精度数据采样装置、液晶显示触摸屏、智能高频充电模块、铅酸密维护蓄电池、交直流配电单元等组成。

- 一体化设计，标准化产品，模块化结构，数字化控制，图像化显示。
- 交流输入自动切换，设置防雷保护，交流异常自动报警。
- 数字化高频开关电源模块，热插拔结构，N+1冗余配置，具有手/自动控制2种工作方式。
- 对系统充、放电全过程自动跟踪，在线检测单体电池电压，各馈线绝缘状况。数字化智能充电模块，完全按电池特性曲线进行充电，具有温度自动补偿功能。大屏幕液晶显示各单元实时状态及数据，屏幕轻触操作修改运行参数及均浮充状态切换。
- 中央监控装置故障时，高频充电模块立即处于默认参数运行状态，防止系统崩溃。
- 利用专用直流断路器及空气开关短延时性，解决保护电器协调性。
- 具有RS232/RS485物理通讯口，标准MODBUS通讯协议，人机对话友好，可根据参数设置自动告警。
- 根据用户需求，可增加各功能选配件。



Brief introduction to GZDW30:

For the raising requirement to the open form of software and communication function from the electric system, in the field of Dc supply , we developed a intelligent digital DC power screen with higher degree of automation, more rational allocation of the protection, regulation of all-digital detection and controlling. The series consist of programmable controller PLC, high precision of data sampling device, intelligent high frequency charging module, maintenance-free lead battery and AC/DC distribution unit.

- Integrated design, standardized products, modular structure, digital controlled, image displaying.
- Auto conversion between AC and DC, lightning protection , auto warning to unusual AC current
- Digital high frequency switch power unit, hot-swappable structure, N+1 redundant configuration, with both manual and automatic control method;
- Entire process of automatic tracking to the system charge and discharge; on-line detection of single battery voltage and insulation condition of the feeder line. With digital intelligent charging modular who can charge the battery according to the performance plot; with temperature compensation function. With big size touch screen, can display all the status and data of all modules, modify the operating parameters and control the conversion between the equalizing charging and floating charging.
- High-frequency charging module will work in a state default parameters situation immediately to prevent the collapse of the system in case of central monitoring device failure.
- Ensure the coordination of the protective equipments by the time relay of DC disconnector and air switch.
- With RS232/RS485 physical communications port and standard MODBUS communication protocol; friendly man-machine conversation interface, easy operation.
- Possible to add also the parts with other functions according To the requirement of customer;

类型介绍 TYPE INTRODUCTIONS

GZDW33 系列简介:

该系列由工业控制计算机、液晶平板电脑、高精度数据采集装置、智能高频充电模块、铅酸密维护蓄电池、交直流配电单元等组成，是目前国内智能化程度最高、功能最全面的系列产品。

- 灵活运用了工控机的开放性组态及虚拟以太网通讯，运用无线蓝牙通讯技术，真正实现了无线遥控。
- WindowsXP操作平台，真人语音报警系统、多重打印输出系统等超前配置，为您带来全新的智能体验。
- 交流输入全自动切换，设置防雷及过欠压保护、缺相异常等自动报警。
- 数字化高频开关电源模块完全按电池特性曲线进行充电，热插拔结构，N+1冗余配置，具有手/自动控制多种工作方式。
- 对系统充、放电全过程自动跟踪，在线检测单体电池电压及温度，各馈线绝缘电阻状况，具有温度自动补偿功能。
- 超大屏幕液晶显示各单元实时状态及数据，屏幕轻触操作修改运行参数、均浮充状态切换及多重密码保护功能。
- 中央监控装置故障时，高频充电模块立即切换到默认参数运行状态，防止系统崩溃。
- 大容量告警信息记录，并具有时钟打印功能。
- 配置多元化，可根据用户需求定制各种功能组件。



Brief introduction to GZDW33:

For the raising requirement to the open form of software and communication function from the electric system, in the field of Dc supply , we developed a intelligent digital DC power screen with higher degree of automation, more rational allocation of the protection, regulation of all-digital detection and controlling. The series consist of programmable controller PLC, high precision of data sampling device, intelligent high frequency charging module, maintenance-free lead battery and AC/DC distribution unit.

- Flexibility in the use of the IPC open configuration and virtual Ethernet communications, using Bluetooth wireless communication technology, a real wireless remote control realized;
- Window xp operating system , real voice alarm system, multi-output system, and other advanced printing configuration, which will bring you a brand new intelligent experience;
- Auto conversion between AC and DC, lighting protection , auto warning to unusual AC current
- Digital high frequency switch power unit, hot-swappable structure, N+1 redundant configuration, with both manual and automatic controlling method;
- Entire process of automatic tracking to the system charge and discharge; on-line detection of single battery voltage and insulation condition of the feeder line. With digital intelligent charging modular who can charge the battery according to the performance plot; with temperature compensation function.
- With big size touch screen, can display all the status and data of all modules, modify the operating parameters and control the conversion between the equalizing charging and floating charging. With multiple codes function.
- High-frequency charging module will work in a state default parameters situation immediately to prevent the collapse of the system in case of central monitoring device failure.
- With large-capacity alarm information records and clock printing function;
- Possible to add also the parts with other functions according to the requirement Of customer;

类型介绍 TYPE INTRODUCTIONS

GZDW10 系列简介:

➤ 该系列是我公司专门针对24AH及以下小容量而研发的壁挂式直流电源系统，由微机监控装置、母线自动调压装置、

高频充电模块、铅酸免维护蓄电池、交直流配电单元等组成。

➤ 系统采用一体化设计思想，均采用热插拔结构，安装、维护方便快捷。

➤ 监控模块采用LCD汉字菜单显示，可实现参数设置、状态检测、故障指示等功能。

➤ 系统具有结构简单、运行可靠，经济实用、占地面积小等特点。

➤ 具有与自动化系统连接的四遥功能，提供RS485通讯接口和MODBUS通讯规约。

Brief introduction to GZDW10:

➤ The series is a kind of wall-hanging DC supply, which was developed by us for the small system whose capacity is lower or equal to 24AH specially.

Consisted of microprocessor monitor device, high frequency charging-up module, bus bar voltage auto-adjusting device,

Maintenance-free lead battery and AC/DC distribution unit.

➤ System designed according to an integration idea, with hot-swappable structure; installation and maintenance convenient;

➤ LCD monitor module with Chinese menu, parameters settable, state and fault directed;

➤ The system is simple, reliable, economical and practical;

➤ The system can be connected to the automatic system thanks to its remote function, with RS485 physical port and MODBUS communication Protocol ;



组件介绍 FUNCTION UNITS INTRODUCTIONS



GJK-20
智能型微机监控装置



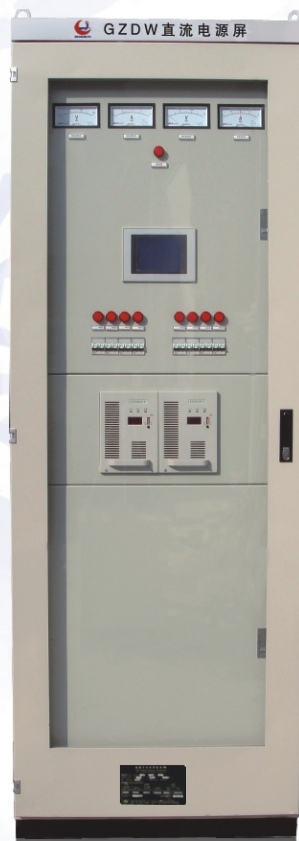
GJK-30
一体化微机监控装置



GUL10
工业UPS电源



PWS6600
液晶显示触摸屏



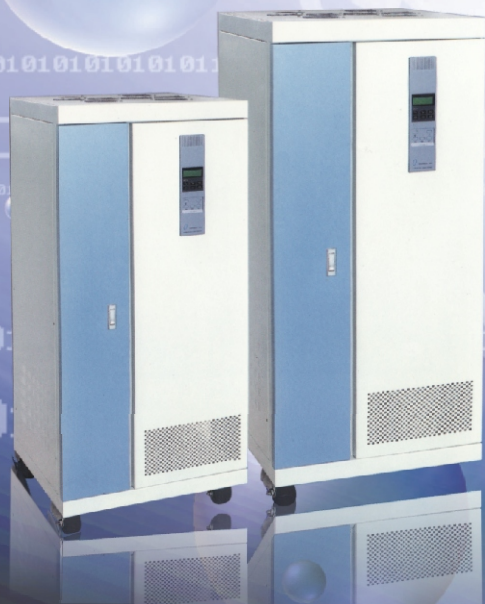
GJS-2
绝缘闪光装置



GBXJ-21
电池巡检装置



GWJJ-20
微机绝缘监测装置





GGK22010
高频充电模块



HD22010-3
智能型高频充电模块



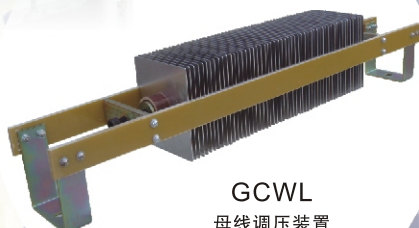
SH65-12
铅酸免维护蓄电池



TP560-L
液晶显示触摸屏



S7200
微机监控系统



GCWL
母线调压装置



上海贵捷电气有限公司
SHANGHAI GUIJIE ELECTRIC CO.,LTD.

地址：上海市金山区山阳镇朱山路451号-7幢
邮编：201508
总机：021-51688863
传真：021-51620582
Http: www.gjelec.com
Email: 17342208@163.com